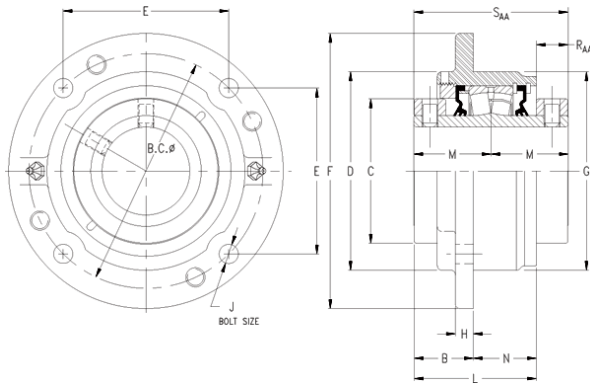




SNR BEARING CORP.OF AMERICA



timken QAACW13A207S Solid Block/Spherical Roller Bearing Housed Units-Double Concentric Piloted Flange Cartridge

Bearing No. QAACW13A207S

QAACW13A207S Bearing 2D drawings and 3D CAD models

Engineering Group	Mounted Bearing
Shaft Size	2-7/16 in
Shaft Size Type	Imperial
Full Timken Part Number	QAACW13A207SB
Locking Style	Double Concentric
Weight	16 lb
Housing Style	Piloted Flange Cartridge
UPC Code	0883450017206
Dimension BC	6.50 in
Dimension C	3.810 in
Dimension E	4.60 in
Dimension B Fix	1.86 in
Dimension B Exp	1.94 in
Dimension F	7.63 in
Dimension D	5.50 in
Dimension H	0.50 in
Dimension J (Bolt Size)	0.5 in
Dimension M	2.15 in
Dimension G	5.500 in
Dimension L Exp	3.63 in
Dimension L Fix	3.55 in
Dimension N	1.69 in
Dimension RAA	0.75 in
Dimension SAA	4.3 in
C0 - Static Load	48600 lb



SNR BEARING CORP.OF AMERICA

C - Dynamic Load (Basic)	46400 lb
e - Geometry Factor	0.24
Y1 - Geometry Factor	2.79
Y2 - Geometry Factor	4.15
Oil Lubrication - M/N Seal	1800 rpm
Oil Lubrication - T Seal	3200 rpm
Oil Lubrication - B/C/O Seal	1500 rpm
Grease Lubrication - M/N Seal	1800 rpm
Grease Lubrication - T Seal	2800 rpm
Grease Lubrication - B/C/O Seal	1500 rpm
Float	0.083 in
Shaft Tolerance	0.0015 in
Eng Internal Radial Clearance - Min	0.0016
Eng Internal Radial Clearance - Max	0.0026
Pre Install Clearance Min	0.0016 in
Pre Install Clearance Max	0.0026 in